

8 Steps to Successfully Using a TestingPoint Answer Key In the Classroom

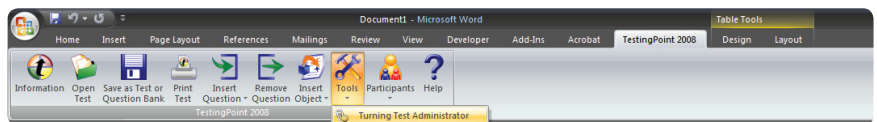
1 Plug in the receiver.



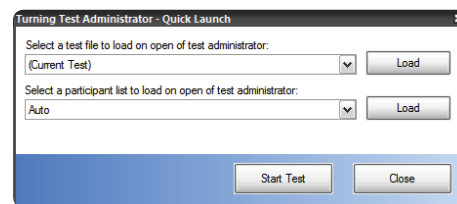
2 Open TestingPoint by double clicking the icon from the desktop.



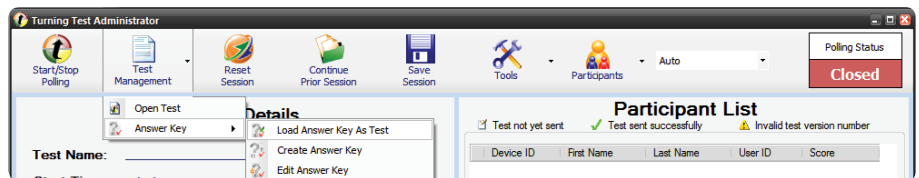
3 Open the Turning Test Administrator.



4 Close the Quick Launch box.



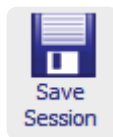
5 Load an Answer Key as Test.



6 Start Test, then Close Test after all tests are submitted.



7 Save the Session.



8 Generate Reports.

