

The World's Leading Response Solution for Presenters, Trainers & Consultants

ENGAGE, POLL & ASSESS WITH TurningPoint

What is the TurningPoint Audience Response System?

The TurningPoint Audience Response System (ARS) allows full interactivity, engaging each and every participant by giving them a voice in the form of a credit card sized keypad or via a web-enabled device such as a smartphone. Presenters, trainers & consultants use TurningPoint to gauge comprehension levels and to encourage the sharing of opinions. Responses can be collated and displayed during the session in real-time or can be withheld for later reporting and analysis. The TurningPoint suite can seamlessly integrate with Microsoft PowerPoint or float over any software application or computer desktop with the included TurningPoint AnyWhere software.



Integrating TurningPoint into your business environment is your key to efficiently gathering critical data and feedback. Use TurningPoint for Staff Training & Induction, Compliance Testing, Market Research and Stakeholder & Community participation to improve knowledge levels and decision making ability - whilst capturing valuable demographics.

Why choose the TurningPoint Audience Response System?

With the TurningPoint Audience Response System suite you can connect staff, clients and meetings anywhere in the world. Participants can use their TurningPoint radio frequency keypads, their internet enabled mobile phones or their notebooks and connect to any interactive session anywhere, at any time.

TurningPoint is the most powerful Audience Response System available with plug-and-play functionality and a minimal learning curve.

- >> Credit Card sized keypads are lightweight and durable; ideal for any commercial environment.
- >> Poll with your web-enabled computer / smartphone and keypads in the same TurningPoint session.
- >> Poll staff as their opinions are invaluable from a Change Management perspective.
- >> Seamlessly capture and report on opinions, preferences, biases & attitudes.
- >> Plug-and-play hardware allows quick and easy setup.
- >> Each Radio Frequency USB Receiver can receive up to 1,000 responses and has a range in excess of 70m. Connect multiple RF Receivers to a single computer. Longer range receivers are also available.
- >> Combine several meetings in different geographic locations into a single polling session via the included Remote Poll software.
- >> Conduct instant adhoc polling of small or larger meetings with the ResponseCard AnyWhere Receiver - no computer required!
- >> Induct, Train & Assess policy, OH&S, technical & product knowledge on a formal or informal basis.
- >> Utilise the included TurningKey and Results Manager applications to create, deliver and manage compliance testing and assessments with your TurningPoint ARS.
- >> TurningPoint is 100% native to Microsoft PowerPoint - so there is a minimal learning curve, whilst the included TurningPoint AnyWhere software will float over any application.
- >> Undertake Compliance Testing quickly and easily as part of your Risk Management Strategy. Conduct anonymous spot polls to test departments to quickly determine if further action is required.
- >> Comprehensive reporting via Microsoft Word & Excel.
- >> Ideal for use with an eBeam IWB (portable or semi-permanent) to create the perfect interactive meeting room solution!

1 Poll a question & respond with your keypads / computer / smartphone



RF & RF LCD
ResponseCard Keypads



ResponseCard
NXT Keypad



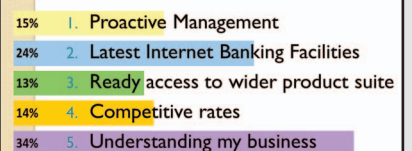
ResponseCard
AnyWhere Receiver



Smartphone
using ResponseWare

2

What are your priorities when choosing your business bank? (choose two)



TurningPoint immediately displays results in the slide



Transform your existing whiteboard into an interactive workspace with eBeam!

eBeam fixed and portable interactive whiteboards (IWB) are innovative, affordable and scalable interactive business solutions that work with both PC & Mac. The eBeam IWB suite provides full IWB functionality including digital Workspace, boardcasting, multiple file formats, ability to resize objects, record & playback and more!

eBeam IWB software modes:

eBeam Projection Software Mode

Works with any data projector to turn any flat, smooth or rigid surface (including table tops) into an interactive shared whiteboard or workspace.

eBeam Whiteboard Software Mode

Record whiteboard notes made with marker pens to your computer and boardcast them in real-time over the internet (data projector not required).

eBeam IWB Models:

eBeam Edge for Business:

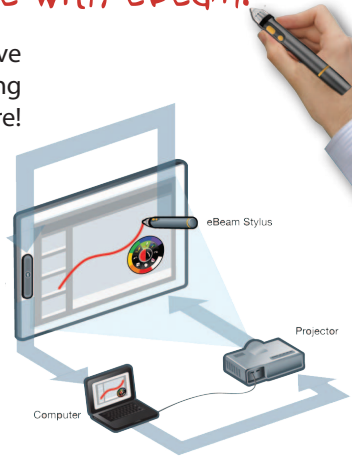
The eBeam Edge system includes a sleek receiver with lightning-fast response time and pixel-perfect precision. It works with the ergonomic eBeam stylus designed for natural and comfortable writing, drawing and computer navigation and boasts an interactive workspace of up to 2.7m.

eBeam Edge Models for Business

- Edge Projection USB
- Edge Whiteboard USB
- Edge Complete USB
- Edge Complete Bluetooth/USB

For users who require both 'Projection' and 'Whiteboard' functionality, the two software modes can be run individually or together (on PC) at the same time on the same board with a single computer via the eBeam 'Complete' version of the Edge model.

Add an Inscribe 200e Wireless Tablet (slate) for total freedom in your meeting. The innovative Inscribe Tablet allows you to control your eBeam IWB from anywhere in the room!



eBeam Edge for Business Complete



Connect all your meeting rooms (& clients) seamlessly and share live boardcasting sessions with eBeam!



Keypad Display Solutions

Data Projectors, Document Cameras, Large Format Displays & Digital Signage

Keypad Interactive offers supply, installation and support for engaging and interactive display solutions for the boardroom, meeting room, training room, common and public areas.

Epson 3LCD Data Projectors cover the full ambit of traditional business display requirements including Portable, Desktop, Venue, Short Throw, Ultra Short Throw and Interactive Projectors that operate natively in 4:3, 16:9 & 16:10 resolutions.

Epson Document Cameras (Visualisers) enrich the meeting experience by allowing the easy capture and display of digital content to your IWB or projection screen. Display 3D objects, text and images and capture them for future use; a great content creation tool!

Samsung & Sony Large Format Display and Digital Signage Solutions (LED/LCD/Plasma) are used to display television, cable tv, digital signage, welcome boards & announcements and can broadcast messages either simultaneously or individually around the office environment. For a larger, brighter multifunctional display, businesses are utilising a multi-panel video wall that can display one larger image or individual content feeds as required.

Typical content for display:

- | | | |
|---------------------------|----------------------|-----------------------|
| - Welcome Messages | - News | - Staff Reminders |
| - Announcements | - Product Promotions | - OH&S Messages |
| - Television / Cable TV | - Company Policy | - Meeting Timetables |
| - Congratulatory Messages | - RSS Feeds | - PC Desktop displays |



CONTACT US FOR A FREE DEMO & QUOTE

SYDNEY - BRISBANE - MELBOURNE - ADELAIDE - PERTH

1800 463 279 www.keepad.com



3PCorp_0911